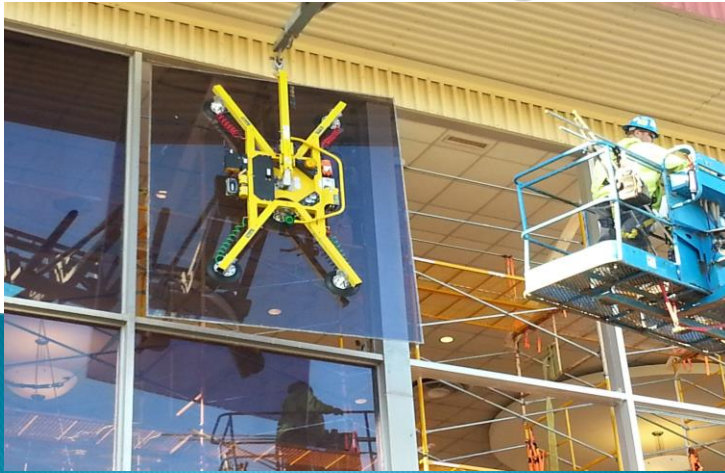


Material Handling In the Glazing Industry



A Unique Material

- ▶ 6-15lbs+ per square foot
- ▶ Awkward
- ▶ Fragile
- ▶ Zero Tolerance
- ▶ Type
 - Tempered
 - Annealed/Plate
 - Laminate



Material Arrives on Site

Planning must be in place before delivery

Crates or singles

Staging or setting on elevations

Coordination with all involved parties



Success is in the details

- ▶ Planning and Strategy
 - Type and size of glass
 - Cribbing
 - Staging location
 - Tools/ Rigging
 - PPE
 - Equipment limitations
 - Balance
 - Trained Employees



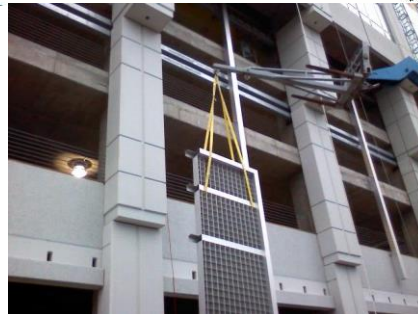
Out With The Old In With The New

- ▶ Falls, Slips
- ▶ Strains
- ▶ Unnecessary Risk
- ▶ Damaged to Structure and Rigging
- ▶ Stable and Solid
- ▶ Safer for workers
- ▶ Contained



Truss boom/ Forklift

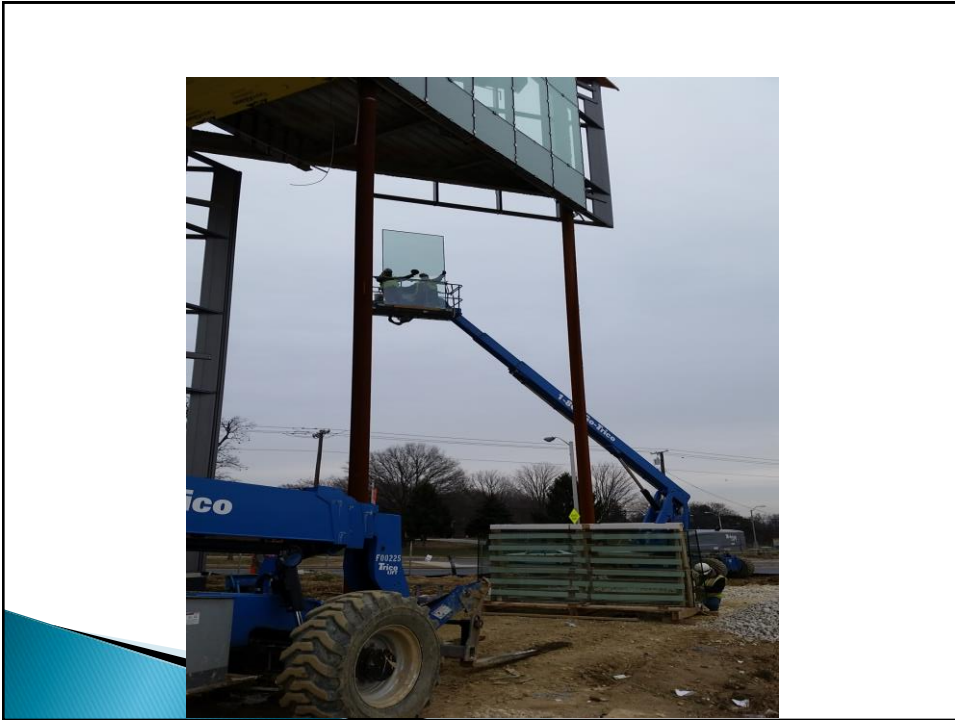
- ▶ Forks create instability for glass crates
- ▶ Versatility
- ▶ Reduced Capacity



Storage and Handling

- ▶ Disperse the weight
- ▶ Every piece is secure
- ▶ Pallet Jacks and Split T's
- ▶ Clear your path
- ▶ Communication is key
 - Lift plans
 - Work in sync





Manipulators and Power Cups



Beta Hoist

- ▶ Material is left on the ground level and lifted into place when installed

